

# Kensington Kindergarten News

## Traffic Flow Patterns and Parking

### South Side Entrance (Front of School)

Follow the one-way traffic pattern to ensure safety and respect for our neighbors.

When going to school from Arlington Avenue:

- Turn east onto Westminster.
- Turn right on Kenyon Ave.
- Left on Willamette Ave.
- Left on Highland Blvd.

When leaving school:

- Turn right on Kenyon Ave.
- Turn right (west) on Westminster to Arlington Ave.

Park on Highland Blvd. or on Kenyon Ave.

**Do NOT park in places marked "staff" and take note of the No Parking area on the east side of Highland near Kenyon.**

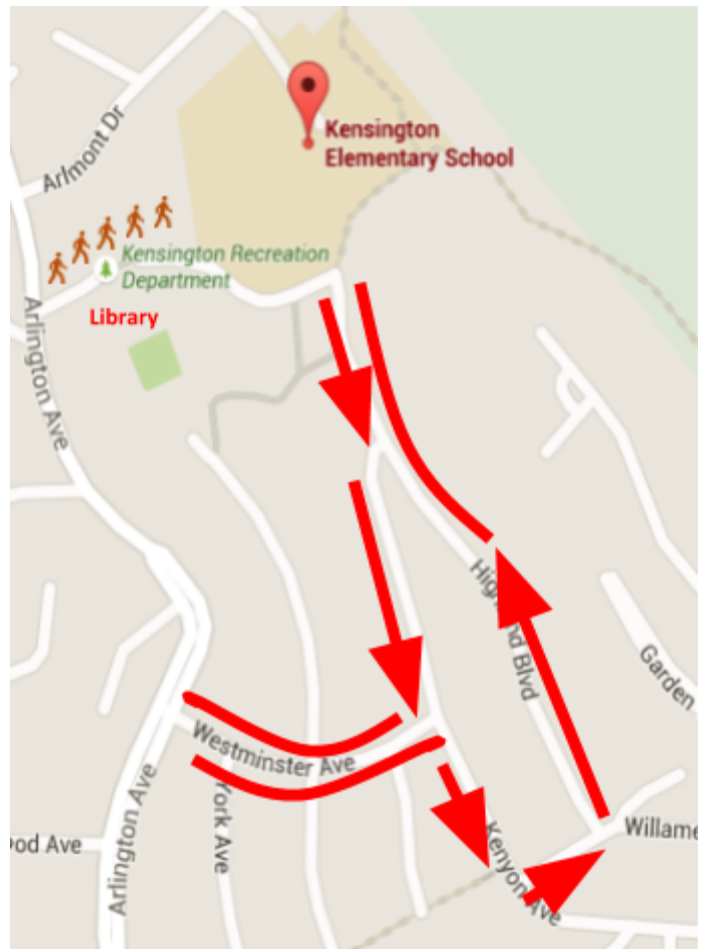
The parking lot is clearly marked with arrows and appropriate signage. One lane is provided for through traffic, and a drop-off area is provided at the front of campus. Cars may not be left unattended in drop-off areas.

### Kensington Library Parking Lot

The Kensington Library is located at 61 Arlington Avenue.

From Arlington Avenue:

- Park in the Library Parking lot or near Kensington Park and tennis courts.
- Walk up the hill on the paved fire trail to school.



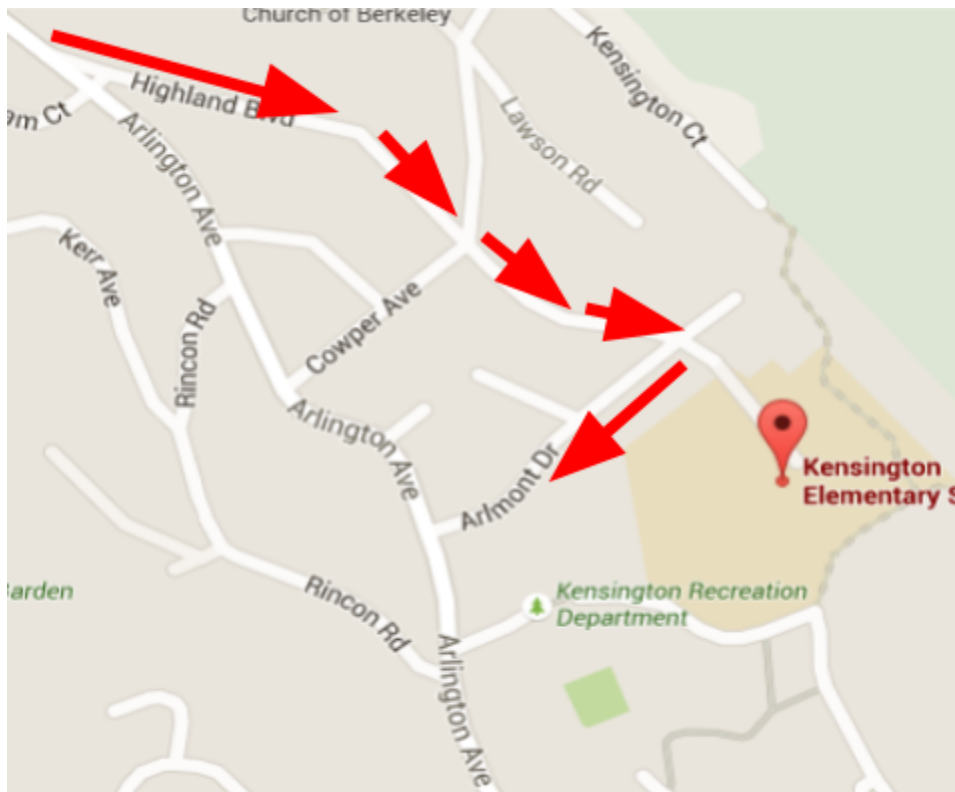
OVER

## North Side Entrance (Back of School)

NOTE: All vehicles drop off students outside of the school gate. The entrance to the school property is for **pedestrians only** –no vehicles other than staff vehicles are allowed in staff parking lot.

From Arlington Avenue:

- Turn east onto Highland Blvd.
- Continue until you reach the corner of Highland and Arlmont and stop your vehicle.
- This is the drop off area. Please **DO NOT PARK** on Highland in the drop off zone. Students should walk to school using the right hand side of the street and crosswalk.
- After dropping off your child, continue down Arlmont to Arlington Ave. Do not drive up Arlmont from Arlington. Follow the posted traffic control signs.



### Golden Rules of Traffic and Parking!

- Do NOT park in ANY spot on school grounds, not even for “a minute.”
- Do NOT drive onto campus through the north side school gate.
- Do NOT drive around other cars that are dropping off children. Be patient! We are all going to the same place!